



ANNUAL REPORT



2020/21





FROM THE HEAD OF SCHOOL

This Annual Report from 2020-21 reflects God's abundant blessing on LCS. The year began with a high level of uncertainty and anxiety about re-entry to school amid a pandemic. Students and teachers demonstrated remarkable resilience and creativity in adapting to the novel challenges before them. They pushed forward through the postponements and modifications to normal procedures for academics, fine arts, and athletic events. Zoom became a vital part of our lives. Infection rates began to fall by second quarter as life began to trudge toward normalcy.

In January we were all saddened by the passing of Mr. Mike Musick. His service in the classroom and as Cross Country and Track Coach touched hundreds of lives. Tributes poured in from around the community and across the country in recognition of his influence over the years.

In April LCS engaged in a vigorous strategic planning initiative that will focus our school improvement efforts for the next five years. The Strategic Financial Plan is a key component of the plan that will enable school leadership to deploy our finite resources with proper priority.

We were blessed with a successful Financial Aid Gala that enabled us to meet the \$150,000 matching gift challenge and to continue to keep LCS accessible to as many families as possible.

The Annual Report reflects our desire for financial transparency as we endeavor to exercise faithful biblical stewardship of the resources entrusted to us. We recognize that all the funds available to us come from tuition or donations. We want to provide the information necessary to promote fiscal confidence among all our stakeholders and ministry partners.

The LCS Board of Directors receives a complete audit each year as a part of their fiduciary responsibilities to provide financial oversight for the school. A copy of the audit may be reviewed in the Business Office. The school budget is carefully designed to provide the maximum benefit to the students in the most efficient manner. Donors can be assured that funds contributed to LCS are spent as promised by the school in accordance with the intent of the donor.

We are grateful for the generous support of so many who enable us to provide our students with high quality instruction, a well-maintained campus, a safe and secure environment and a broad range of academic, fine arts, and athletic opportunities. We are appreciative of those who have invested in the lives of not only the students of today, but also in the lives of many who will walk these halls in the future.

To all who continue to stand with us and invest in Christian schooling at LCS, we say, "Thank You" on behalf of the over 1000 students who come to the campus each day. We trust you will find this report encouraging. If you have any questions about the data presented here or any aspect of the school's financial operation, please feel free to contact us.

With appreciation for your partnership and prayers for LCS,

Mike Sligh, Ed. D.
Head of School

TABLE OF CONTENTS

- 2** Headmaster Letter
- 4** LCS At a Glance
- 5** Class of 2021 Highlights
- 6** Enrollment
- 7** Financials
- 8** Giving
- 10** How to Give



LAKELAND
CHRISTIAN
SCHOOL





LCS AT A GLANCE

Lakeland Christian School is one of the nation's premier private Christian schools. We provide challenging academics, championship athletics and award-winning fine arts. The school's primary distinction, though, is the Biblical worldview that permeates every facet of school life. The following information describes the vibrant LCS of today, a school community dedicated to higher levels of excellence with each passing year.

THE SCHOOL

- Polk County's oldest and largest K4-12 private school - established in 1954
- Non-denominational
- Biblical worldview
- Extensive co-curricular program
- School families represent more than 200 different local churches
- Accredited by the Association of Christian Schools International (ACSI), the Southern Association of Colleges and Schools (SACS), the Florida Council of Independent Schools (FCIS)
- Member of the following associations: Florida Association of Academic Non-Public Schools (FAANS), Florida High School Athletic Association (FHSAA), Florida Bandmasters Association (FBA), Florida Vocal Association (FVA), Florida School Music Association (FSMA)

The mission of Lakeland Christian School is to educate students in the light of God's Word to equip them for a lifetime of learning, leadership, service and worship.

ACADEMICS

- Engaging and challenging curriculum
- 93% of the 2021 graduates pursued college
- Test scores exceed local, state and national averages
- 63 AP, Honors and Dual-Enrollment courses offered

FACULTY

- Teachers maintain professional certifications in their fields
- Student-to-faculty ratio is 14:1
- 31 teachers hold master's degrees
- 30 teachers have taught at LCS for 10 years or more

ATHLETICS

- 35 teams in 14 sports, grades 6-12
- 24 State titles, 26 State runners-up
- Outstanding on-campus stadium, athletic center and gymnasium

ARTS

- Award-winning band and choir programs
- Musical production each year
- Private piano lessons available



CLASS OF 2021 HIGHLIGHTS

The Lakeland Christian School Class of 2021 returned to campus for their senior year, adapting to the pandemic protocols while excelling in the classroom, on the stage and on the athletic fields. Here are just a few statistics about the Class of 2021:



62 PERCENT
EARNED COLLEGE CREDITS



\$3,457,338
EARNED IN SCHOLARSHIPS



12,872
COMMUNITY SERVICE HOURS
TALLIED BY THE CLASS OF 2021



FLORIDA BRIGHT FUTURES
SCHOLARSHIPS:

16 PERCENT
QUALIFIED FOR FLORIDA ACADEMIC
SCHOLAR AWARDS

15 PERCENT
QUALIFIED FOR FLORIDA
MEDALLION AWARDS

Approximately 93% of the graduates from the Class of 2021 have pursued post-secondary education in schools across America. In the Class of 2021, 87% of students matriculated to four-year universities and 6% to two-year colleges.

LCS ENROLLMENT REMAINS STEADY

Lakeland Christian School was blessed with another year of strong enrollment for the 2020-2021 school year as families continue to desire a Christian education for their children. As new families join the LCS community, more children and young people are reached for the sake of the Gospel.

2020-2021 Total: 1066

Elementary: 447 | Middle School: 264 | High School: 355

2016-2017 Total: 1079

Elementary: 419
Middle School: 269
High School: 379
Discovery: 12

2017-2018 Total: 1108

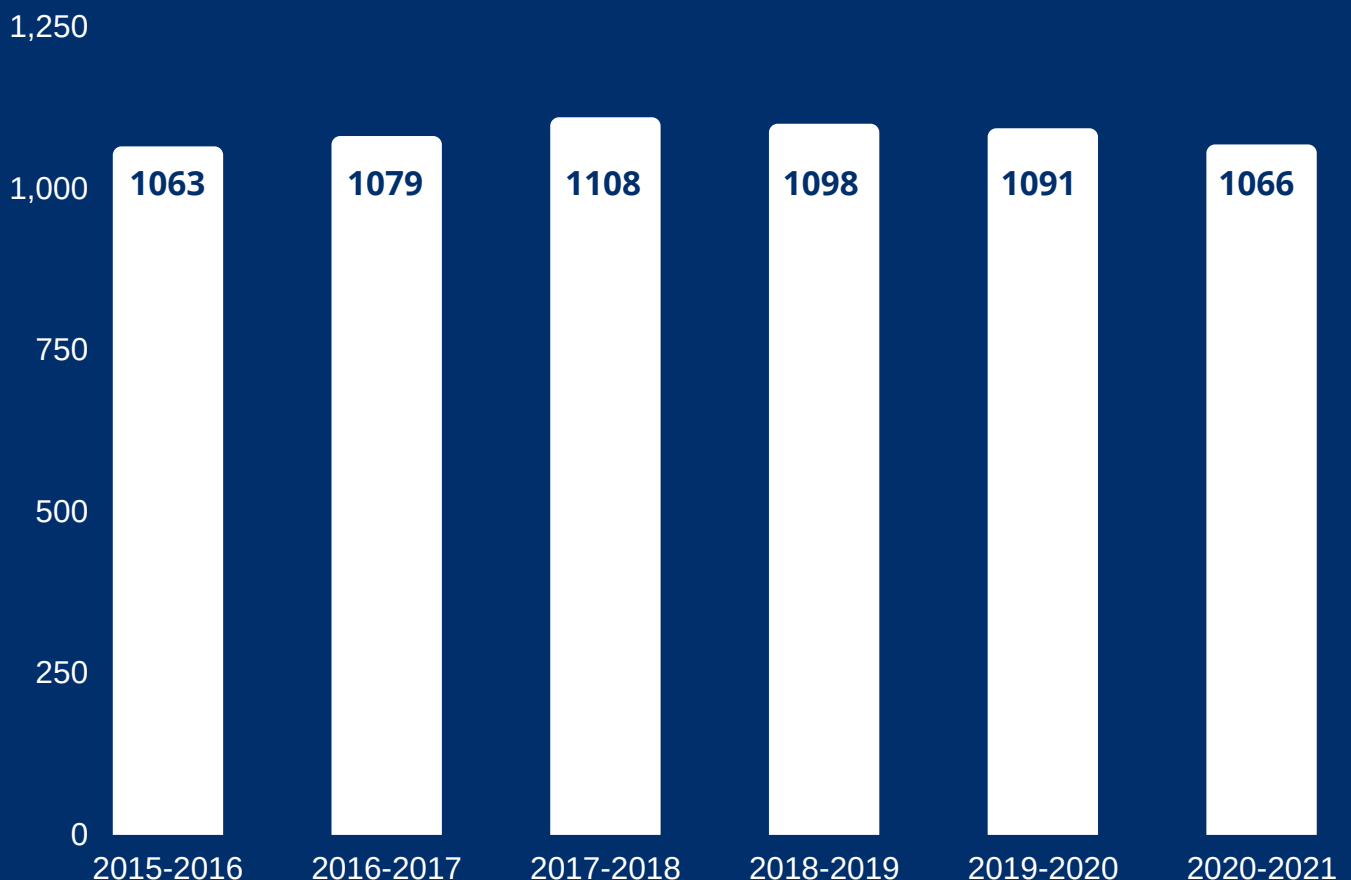
Elementary: 455
Middle School: 252
High School: 386
Discovery: 15

2018-2019 Total: 1098

Elementary: 445
Middle School: 275
High School: 378

2019-2020 Total: 1091

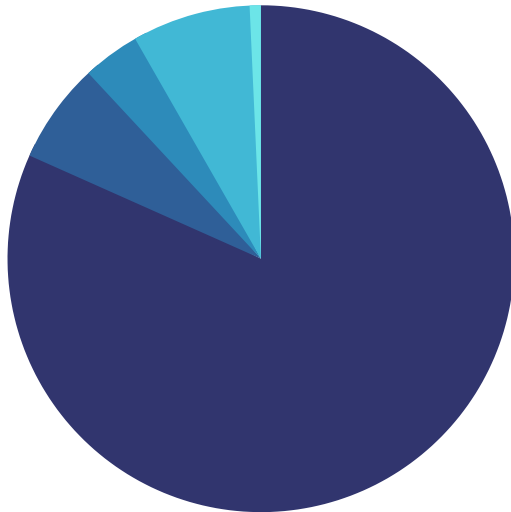
Elementary: 443
Middle School: 272
High School: 376



LCS BLESSED BY SOUND FINANCIAL MANAGEMENT

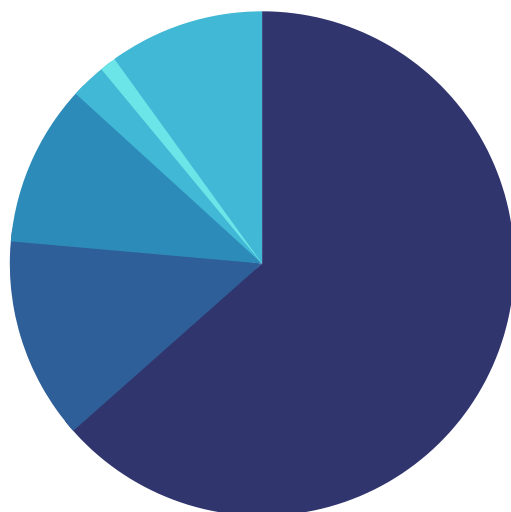
Lakeland Christian School always desires to reflect careful, conscientious stewardship of the resources necessary to manage the operations of a robust school. LCS is blessed to – once again – present a solid statement of operations for the 2020-2021 school year.

REVENUE



● Tuition & Fees	\$ 11,415,999
● Co-Curricular Activities	\$ 895,419
● Ancillary Income	\$ 510,246
● Operating Contributions	\$ 1,056,426
● Other Income	\$ 99,862
<hr/>	
Total Revenue	\$ 13,977,952

EXPENSES



● Salaries & Benefits	\$ 8,799,846
● School Instruction	\$ 1,794,391
● Athletics	\$ 1,436,374
● Ancillary	\$ 310,374
● Fine Arts	\$ 145,302
● General Operations	\$ 1,379,845
<hr/>	
Total Expenses	\$ 13,866,130

NET SURPLUS FROM OPERATIONS

\$111,822

*The numbers presented represent the operations of the school. Non-operating activity (investment returns, campaign activity, permanently restricted donations, etc.) is not reflected above.
A complete copy of the auditors' report and corresponding financials are available for review in the school office.*



Faithful gifts,
forever flourishing

THE VIKING FUND

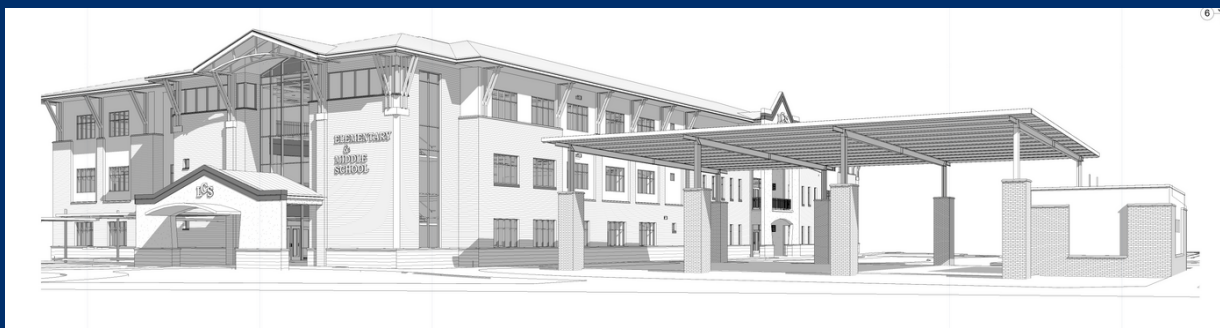
The Viking Fund is the annual giving initiative of Lakeland Christian School. We are blessed to have a multi-generational family of faithful supporters.

This group includes current parents, graduates, alumni families, grandparents, friends from the community, as well as past and present faculty, staff, and administrators. We depend on and are grateful for their generous contributions which help to provide a vibrant educational experience for our students.

During the 2020-2021 school year, total giving was \$398,678.65.

Viking Fund gifts provided support to the following school initiative:

Covered Pavilion



VOYAGES & VICTORIES GALA



The Voyages & Victories Gala is the primary school-wide special event to raise funds for the LCS Financial Aid Fund. The theme for the 5th annual event was *Masquerade*. Proceeds from this event provided needed tuition assistance to families with a demonstrated financial need. Guests gathered at the RP Funding Center for an evening of testimonies, dinner, musical entertainment and a lively auction. The real winners each year are the children and young people who can be at LCS through the generosity of sponsors and attendees.

**More than \$409,000 was raised
through this event.**



STEWARDSHIP GIVING REFLECTS A GENEROUS COMMUNITY

Operating a thriving Christian school like LCS is expensive. Our needs will always exceed revenue from tuition and fees – especially when it is a priority here to make a concerted effort to maintain modest tuition increases. That means LCS counts on the giving of a community of ministry partners – those who provide faithful support to the school year after year. The following information reflects heartfelt generosity to keep LCS on the forefront of educational distinction:

GIVEN/PLEDGED BY CONSTITUENCY

School Parents:
287 gifts | \$348,592.75

Grandparents:
52 gifts | \$1,543,255.00

Alumni:
21 gifts | \$8,845.00

Alumni Parents:
49 gifts | \$298,636.00

Employees:
1,085 gifts | \$176,524.30

Other:
352 gifts | \$4,668,050.72

GIVEN/PLEDGED BY FUNDS

Financial Aid:
499 gifts | \$684,542.00

Families in Crisis:
138 gifts | \$18,085.00

Viking Fund:
1,095 gifts | \$398,678.65

Forging a Firm Foundation:
37 gifts | \$5,837,798.93

Other:
77 gifts | \$104,799.19



2020-2021
TOTAL NUMBER
OF GIFTS

1,846



2020-2021
TOTAL GIVING

\$7,043,903.77



HOW TO GIVE TO LCS

Good financial planning honors God. It may also help you avoid unnecessary taxes and make a larger gift.

CASH GIFTS AND PLEDGES may be made as a single gift or a pledge. Online giving is available.

GIFTS IN KIND possibilities are limitless. LCS uses and needs many goods and services.

APPRECIATED ASSETS (appreciated stock or real estate you have owned for more than one year) will generate a tax deduction based upon fair market value.

TANGIBLE PERSONAL PROPERTY giving will enjoy certain tax advantages.

MATCHING GIFTS for current or retired employees are offered by many corporations.

PLANNED GIFTS allow you to maximize your giving and/or minimize the impact of your estate.

For more information, contact: MattE Diaz, Director of Advancement | 863-688-2771 | mdiaz@lcsonline.org



Estate Planning Made Easy

With will and estate planning help from our partners at PhilanthroCorp, you can ensure that the legacy you leave behind benefits the ones you love with 100% certainty. Starting with a phone interview, they will guide you through a simple process resulting in wills and estate documents that reflect your values and leave a lasting impact on loved ones and charities you hold dear.

Their services are provided to you, by Lakeland Christian School, free of charge. The plan that PhilanthroCorp helps you create can then be implemented by your own personal adviser, or PhilanthroCorp can refer you to an attorney who will draft documents at greatly reduced rates.



PhilanthroCorp will help you discern the important relationships and resources you have and recommend the tools that are most effective to ensure your family is cared for and that you leave the legacy you desire.

Scan the QR code and submit the form or call Susan Wylie at 1-800-876-7958 ext. 2125 to have a PhilanthroCorp representative call you to schedule your first confidential phone appointment.





1111 Forest Park Street, Lakeland, FL 33803

Phone: 863.688.2771 | Fax: 863.682.5637 | Visit us online at lcsonline.org